

# ALSTON BAR & BEEF

## PRE THEATRE MENU

MONDAY – FRIDAY 3 – 6PM 2 COURSES FOR £25

### ALLERGEN INFORMATION

Gluten = G  
Milk = M

Egg = E  
Fish = F

Mollusc = MO  
Crustacean = CR

Nuts = N  
Celery = CE

Soya = SO  
Peanuts = P

Mustard = MU  
Sesame = SE

Lupin = L  
Sulphites = SU

### BITES

ALSTON'S BEEF JERKY (G, F) 6.0 FOCACCIA & SEA SALT BUTTER (V) (G, M) 5.0 MIXED OLIVES (V+) 4.5

### STARTERS

HAGGIS PAKORA (G, M, MU)  
CURRIED MANGO YOGURT

BUFFALO CAULIFLOWER WINGS (V) (M)  
BLUE CHEESE & SRIRACHA RANCH

WHITE WINE & CHILLI KING PRAWNS (G, CR, SU)  
LEMON AIOLI, GRILLED FOCACCIA

### MAINS

TWEED VALLEY FLAT IRON FRITES (SU, M)  
PEPPERCORN SAUCE

TWEED VALLEY D-RUMP STEAK FRITES (SU, M)  
PEPPERCORN SAUCE  
(£5 SUPPLEMENT)

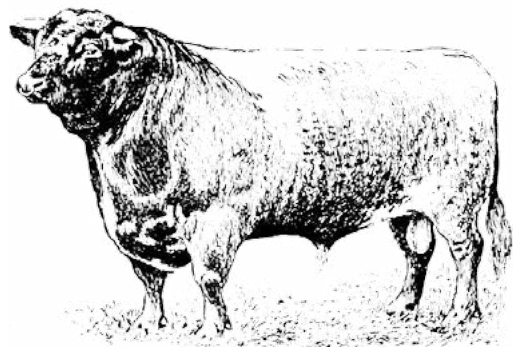
ASPARAGUS & COURGETTE LINGUINE (V+) (G, SO)  
LEMON, DILL & MINT CREAM

BATTERED KING PRAWNS (CR, SU, MU)  
DOUBLE COOKED CHIPS, TARTARE SAUCE, DRESSED SALAD

CHICKEN CAESAR SALAD (F, E, G, M, MU)  
ROMAINE, ANCHOVY, PARMESAN, CAESAR DRESSING, FOCACCIA CROUTONS

### SIDES

PARMESAN TRUFFLE CHIPS (M) 6.5  
HOUSE SALAD & DIJON VINAIGRETTE (V) (MU) 6.5  
ISLE OF MULL MAC & CHEESE (V) (G, M, MU) 6.5  
BUTTERED GREENS (V) (M) 6.5  
GARLIC & CHILLI MUSHROOMS (V+) (SU) 6.5  
COURGETTE FRIES & LEMON AIOLI (V+) (SU) 6.5  
ROAST CAULIFLOWER CHEESE (V) (G, M, MU) 6.5  
BATTERED ONIONS (V+) (SU) 6.5



PLEASE LET US KNOW OF ANY ALLERGIES. (V) = VEGETARIAN (V+) = VEGAN.  
AN OPTIONAL 10% SERVICE CHARGE WILL BE AUTOMATICALLY APPLIED TO  
ALL FOOD & DRINKS IN THE RESTAURANT. ALL SALES OF DRINKS OVER THE  
BAR WILL HAVE AN OPTIONAL 4% SERVICE CHARGE APPLIED.

PLAN  
of the City of  
GLASGOW.  
1783.

# ALSTON BAR & BEEF

ALSTON STREET WAS A BUSTLING THOROUGHFARE THAT CONNECTED ARGYLE STREET WITH GORDON STREET UNTIL THE MID-1870S WHEN ALL THE BUILDINGS WERE DEMOLISHED TO MAKE WAY FOR THE FIRST PHASE OF CENTRAL STATION.

IT RAN NORTH TO SOUTH THROUGH GRAHAMSTON, AN IMPORTANT LOCATION FOR GLASGOW'S GROWING INTERNATIONAL TRADE, PROVIDING PREMISES FOR PROCESSING AND STORING GOODS FOR DESPATCH TO COUNTRIES AROUND THE WORLD. THERE WERE SEVERAL LARGE WAREHOUSES AND A SUGAR REFINERY, SURROUNDED BY CARTERS' YARDS, TENEMENT DWELLINGS AND VILLAS.

THE 'FIRST THEATRE IN GLASGOW' OPENED IN ALSTON STREET IN 1764. IN FACT IT WAS NOT LOCATED IN GLASGOW BUT IN GRAHAMSTON, JUST A FEW YARDS OUTSIDE THE CITY BOUNDARY, BECAUSE THE CITY AND CHURCH ELDERS WOULD NOT ALLOW THE 'HOUSE OF THE DEVIL' TO BE OPENED WITHIN THE CITY.

ALSTON BAR & BEEF IS LOCATED JUST UNDER THE NORTH END OF THE ORIGINAL ALSTON STREET AND WE HOPE THAT CUSTOMERS WILL TAKE AN INTEREST IN THE STORY OF GRAHAMSTON, GLASGOW'S FORGOTTEN VILLAGE.



[ALSTONGLASGOW.CO.UK](http://ALSTONGLASGOW.CO.UK)

CENTRAL STATION | 79 GORDON STREET | GLASGOW, G1 3SQ  
0141 221 7627 | [INFO@ALSTONGLASGOW.CO.UK](mailto:INFO@ALSTONGLASGOW.CO.UK)