

ALSTON BAR & BEEF

SUNDAY MENU

2 COURSES FOR £30 / 3 COURSES FOR £35

ALLERGEN INFORMATION

Gluten = G
Milk = M

Egg = E
Fish = F

Mollusc = MO
Crustacean = CR

Nuts = N
Celery = CE

Soya = SO
Peanuts = P

Mustard = MU
Sesame = SE

Lupin = L
Sulphites = SU

BITES

ALSTON'S BEEF JERKY 6.0 [G, F] FOCACCIA & SEA SALT BUTTER (V) 5.0 [G, M] MIXED OLIVES (V+) 4.5

STARTERS

HAGGIS PAKORA [G, M, MU]
CURRIED MANGO YOGURT

BUFFALO CAULIFLOWER WINGS (V) (M)
BLUE CHEESE & SRIRACHA RANCH

WHITE WINE & CHILLI KING PRAWNS [G, CR, SU]
LEMON AIOLI, FOCACCIA

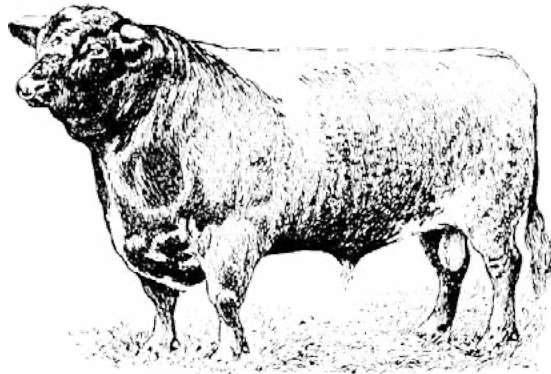
SUNDAY ROASTS

ALL OUR ROASTS ARE SERVED WITH ROAST POTATOES, MASHED POTATO, SAVOY CABBAGE & BROCCOLI IN TARRAGON BUTTER, HONEY & THYME ROAST CARROTS, YORKSHIRE PUDDING & GRAVY [G, M, E]

DRY AGED TWEED VALLEY RUMP

CORN FED CHICKEN BREAST

SPICED LENTIL &
CAULIFLOWER ROAST (V+)



SIDES

PARMESAN TRUFFLE CHIPS (M) 6.5
HOUSE SALAD & DIJON VINAIGRETTE (V) (MU) 6.5
ISLE OF MULL MAC & CHEESE (V) [G, M, MU] 6.5
BUTTERED GREENS (V) (M) 6.5
GARLIC & CHILLI MUSHROOMS (V+) (SU) 6.5
COURGETTE FRIES & LEMON AIOLI (V+) (SU) 6.5
ROAST CAULIFLOWER CHEESE (V) [G, M, MU] 6.5
BATTERED ONIONS (V+) (SU) 6.5

DESSERTS

VANILLA POACHED PEAR (V+) (SO) 6.5
ORANGE SHORTBREAD CRUMBLE, MAPLE CUSTARD
BANANA & SALTED (M, E) 6.5
CARAMEL ETON MESS (V) 6.5
DARK CHOCOLATE BROWNIE (V) (SO, E, G, M) 6.5
CHOCOLATE SAUCE, VANILLA ICE CREAM

PLEASE LET US KNOW OF ANY ALLERGIES. (V) = VEGETARIAN (V+) = VEGAN. AN OPTIONAL 10% SERVICE CHARGE WILL BE AUTOMATICALLY APPLIED TO ALL FOOD & DRINKS IN THE RESTAURANT. ALL SALES OF DRINKS OVER THE BAR WILL HAVE AN OPTIONAL 4% SERVICE CHARGE APPLIED.

PLAN
of the City of
GLASGOW.
1783.

ALSTON BAR & BEEF

ALSTON STREET WAS A BUSTLING THOROUGHFARE THAT CONNECTED ARGYLE STREET WITH GORDON STREET UNTIL THE MID-1870S WHEN ALL THE BUILDINGS WERE DEMOLISHED TO MAKE WAY FOR THE FIRST PHASE OF CENTRAL STATION.

IT RAN NORTH TO SOUTH THROUGH GRAHAMSTON, AN IMPORTANT LOCATION FOR GLASGOW'S GROWING INTERNATIONAL TRADE, PROVIDING PREMISES FOR PROCESSING AND STORING GOODS FOR DESPATCH TO COUNTRIES AROUND THE WORLD. THERE WERE SEVERAL LARGE WAREHOUSES AND A SUGAR REFINERY, SURROUNDED BY CARTERS' YARDS, TENEMENT DWELLINGS AND VILLAS.

THE 'FIRST THEATRE IN GLASGOW' OPENED IN ALSTON STREET IN 1764. IN FACT IT WAS NOT LOCATED IN GLASGOW BUT IN GRAHAMSTON, JUST A FEW YARDS OUTSIDE THE CITY BOUNDARY, BECAUSE THE CITY AND CHURCH ELDERS WOULD NOT ALLOW THE 'HOUSE OF THE DEVIL' TO BE OPENED WITHIN THE CITY.

ALSTON BAR & BEEF IS LOCATED JUST UNDER THE NORTH END OF THE ORIGINAL ALSTON STREET AND WE HOPE THAT CUSTOMERS WILL TAKE AN INTEREST IN THE STORY OF GRAHAMSTON, GLASGOW'S FORGOTTEN VILLAGE.



ALSTONGLASGOW.CO.UK

CENTRAL STATION | 79 GORDON STREET | GLASGOW, G1 3SQ
0141 221 7627 | INFO@ALSTONGLASGOW.CO.UK