

ALSTON BAR & BEEF

SUNDAY MENU

2 COURSES FOR £25 / 3 COURSES FOR £30

ALLERGEN INFORMATION

Gluten = G
Milk = M

Egg = E
Fish = F

Mollusc = MO
Crustacean = CR

Nuts = N
Celery = CE

Soya = SO
Peanuts = P

Mustard = MU
Sesame = SE

Lupin = L
Sulphites = SU

BITES

ALSTON'S BEEF JERKY 6.0 [G, F] FOCACCIA & SEA SALT BUTTER (V) 5.0 [G, M] MIXED OLIVES (V+) 4.0

STARTERS

KIMCHI FRITTERS (V+) [SO, MU]

WASABI MAYONNAISE, CRISPY NOODLE SALAD

HAGGIS CROQUETTES [G, E, SO, MU]

SPICED NEEP PURÉE, TATTIE SKINS

CELERIAC & APPLE SOUP (V) [G, M, CE]

HEBRIDEAN BLUE CHEESE CRUMBLE

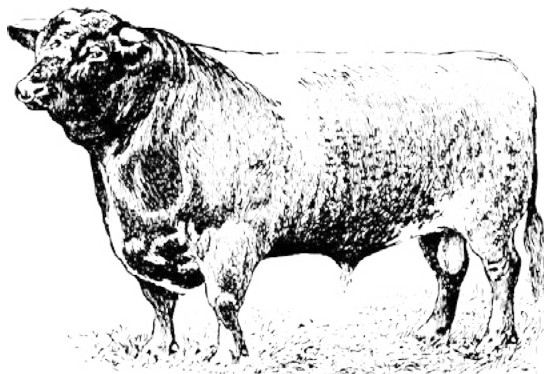
SUNDAY ROASTS

ALL OUR ROASTS ARE SERVED WITH ROAST POTATOES, MASHED POTATO, HISPI CABBAGE & BROCCOLI IN TARRAGON BUTTER, HONEY & THYME ROAST CARROTS, YORKSHIRE PUDDING & GRAVY
[G, M, E]

DRY AGED TWEED VALLEY RUMP

CORN FED CHICKEN BREAST

SPICED LENTIL &
CAULIFLOWER ROAST (V+)



SIDES

PARMESAN TRUFFLE CHIPS (V) [M] 6.0
HOUSE SALAD & DIJON VINAIGRETTE [MU] 6.0
ISLE OF MULL MAC & CHEESE (V) [G, M, MU] 6.0
CREAMED SPINACH & NUTMEG (V+) [SO] 6.0
GARLIC & CHILLI MUSHROOMS (V+) [SU] 6.0
HAGGIS MAC & CHEESE [G, M, MU] 6.0
BRAISED HISPI CABBAGE & CHIMICHURRI (V+) [CE] 6.0
BEER BATTERED ONIONS (V+) [G, SU] 6.0

DESSERTS

DARK CHOCOLATE GANACHE (V+) [SO] 6.0
POPPY SEED SHORTBREAD, ORANGE SORBET
CINNAMON POACHED PEAR (V+) [G, SO, SU] 6.0
COCONUT CRUMBLE, PRUNE ANGLAISE
STICKY TOFFEE PUDDING [G, M, E, SU] 6.0
BUTTERSCOTCH SAUCE, CLOTTED CREAM

PLEASE LET US KNOW OF ANY ALLERGIES. A DISCRETIONARY 10% SERVICE CHARGE WILL BE APPLIED TO ALL TABLES.
THIS MENU IS PRINTED ON 100% RECYCLED PAPER

PLAN
of the City of
GLASGOW.
1783

ALSTON BAR & BEEF

ALSTON STREET WAS A BUSTLING THOROUGHFARE THAT CONNECTED ARGYLE STREET WITH GORDON STREET UNTIL THE MID-1870S WHEN ALL THE BUILDINGS WERE DEMOLISHED TO MAKE WAY FOR THE FIRST PHASE OF CENTRAL STATION.

IT RAN NORTH TO SOUTH THROUGH GRAHAMSTON, AN IMPORTANT LOCATION FOR GLASGOW'S GROWING INTERNATIONAL TRADE, PROVIDING PREMISES FOR PROCESSING AND STORING GOODS FOR DESPATCH TO COUNTRIES AROUND THE WORLD. THERE WERE SEVERAL LARGE WAREHOUSES AND A SUGAR REFINERY, SURROUNDED BY CARTERS' YARDS, TENEMENT DWELLINGS AND VILLAS.

THE 'FIRST THEATRE IN GLASGOW' OPENED IN ALSTON STREET IN 1764. IN FACT IT WAS NOT LOCATED IN GLASGOW BUT IN GRAHAMSTON, JUST A FEW YARDS OUTSIDE THE CITY BOUNDARY, BECAUSE THE CITY AND CHURCH ELDERS WOULD NOT ALLOW THE 'HOUSE OF THE DEVIL' TO BE OPENED WITHIN THE CITY.

ALSTON BAR & BEEF IS LOCATED JUST UNDER THE NORTH END OF THE ORIGINAL ALSTON STREET AND WE HOPE THAT CUSTOMERS WILL TAKE AN INTEREST IN THE STORY OF GRAHAMSTON, GLASGOW'S FORGOTTEN VILLAGE.



ALSTONGLASGOW.CO.UK

CENTRAL STATION | 79 GORDON STREET | GLASGOW, G1 3SQ
0141 221 7627 | INFO@ALSTONGLASGOW.CO.UK